

Highlights of ECU Diagnosis



| | |
|---------------------------|--|
| Audi | |
| Engine management | EDC 17CP14 UDS |
| Airbag | AB 20 UDS |
| Convenience electronics | Trailer control unit 4.0 |
| BMW | |
| Parking aid | Parking assistant 4.0 |
| Citroën | |
| Transmission control | BVMP 7.0 |
| Anti-lock braking system | ABS 8.1 VER 1 |
| Electr. energy management | Vehicle power supply control unit VSC 7.0 |
| Running gear/steering | Adaptive damping system 3.1 |
| Ford | |
| Transmission control | 6/7-speed double clutch transmission DCT 450 |
| Engine management | Motronic MED 17.0.1 |
| Jaguar | |
| Central electronics | Rear central electronics 4.1 |
| Anti-theft device | Access system/immobilizer 4.0 |
| Automat. locking diff. | ASD 4.0 |
| Braking system | Electronic parking brake 4.1 |
| Mercedes Benz | |
| Engine management | EDC 17 CP10 CR/EDC CD1D2 |
| Opel | |
| Engine management | EDC Sagem TPP/EGR EDC 17 C59 |
| Peugeot | |
| Transmission control | BVMP 7.0 |
| Anti-lock braking system | ABS 8.1 VAR 1 |
| Electr. energy management | Vehicle power supply control unit VSC 7.0 |
| Running gear/steering | Adaptive damping system 3.1 |
| Driver information | CD changer 7.0 |
| Renault | |
| Airbag | AB 2.1 |
| Engine management | EDC Sagem TPP/EGR |
| Electr. energy management | HV battery 4.0 |
| Electric drive control | Electric drive control MCU 4.0 |
| Driver information | Audio / Navigation 3.0 |
| Vauxhall | |
| Engine management | EDC Sagem TPP/EGR EDC 17 C59 |
| Volvo | |
| Central electronics | ZE 1.1 |
| Transmission control | Twin clutch transmission, 6 speed MPS6 2.0 |
| Driving safety system ESP | Electronic stability program ESP MK 60 UDS |
| VW | |
| Airbag | AB S7.0 AB 20 UDS |
| Convenience electronics | Trailer control unit 4.0 |

Coverage may differ in some countries

Highlights of ECU Diagnosis for Truck

| Brand | Model Series | Note | From - To |
|--------------------------------|---------------------|---|-----------|
| LCV | | | |
| ISUZU | D-Max | D-Max 2.5 Diesel Turbo | 04.2012 - |
| IVECO | Daily 2012 | Daily 33 S ... | 09.2012 - |
| | Daily | Daily 35 S.../ 44 S... / 55 C... / 70 C... | 04.2012 - |
| MITSUBISHI FUSO TRUCK & BUS CO | Canter | Canter 3.0 Eco Hybrid | 05.2012 - |
| Truck | | | |
| ASHOK LEYLAND | 4019 | 4019il | 12.2012 - |
| BMC (SANAYI VE TICARET) | Professional | Pro 625/ 827 / 940 | 01.2012 - |
| FORD | Cargo-World-Truck C | Cargo C 1319 | 01.2012 - |
| | Cargo-World-Truck C | Cargo C 2423 | 01.2012 - |
| IVECO | Stralis Hi-Way | Stralis Hi-Way 320S36 | 01.2013 - |
| | Trakker 2013 | Trakker 190 / 260 / 340 / 380 / 400 / 410 | 01.2013 - |
| MITSUBISHI FUSO TRUCK & BUS CO | Canter | Canter 7C15 Eco Hybrid | 09.2012 - |
| SCANIA | G-Serie 2007 | G 250 / 410 / 480 | 10.2012 - |
| | K-Serie | K 230 / 310 / 400 | 09.2012 - |
| | P-Serie 2004 | P 250 / 280 / 320 / 340 / 360 / 410 | 10.2012 - |
| | R-Serie 2004 | R 440 / 480 / 580 | 10.2012 - |
| VOLVO | FH II Serie | FH 420 / 460 / 500 / 600 / 700 / 750 | 09.2012 - |
| | FM-Serie | FM 330 / 370 / 410 / 420 / 450 / 460 / 500 | 04.2013 - |
| | FMX | FMX 330 / 370 / 410 / 420 / 450 / 460 / 500 / 540 | 04.2013 - |



ESI[tronic] 2.0 News 2013/3



BOSCH
Invented for life

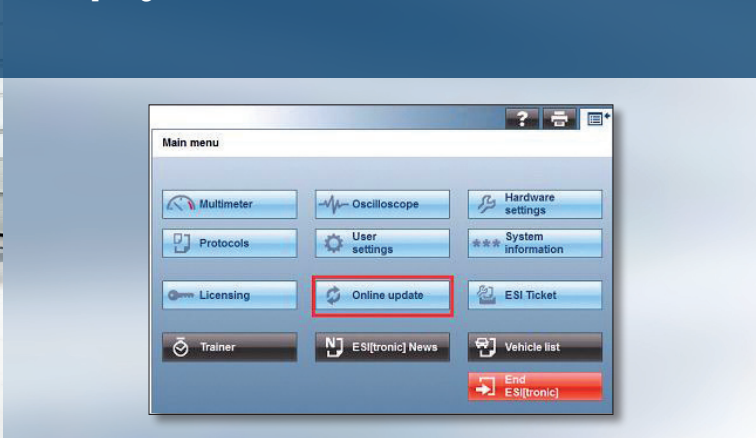
► ESI[tronic] 2.0 - New and up-to-date

- Highlights of ECU Diagnosis
- Highlights of ECU Diagnosis for Truck
- Top Coverage & Electric Vehicles
- Online Updates
- Network Setup
- Troubleshooting Instructions

Coverage for over 29 model ranges



Deployment on PC Networks



Saving time by finding most of the information



Opel/Vauxhall Top Coverage

With this release we cover almost all installed systems for over 29 model ranges of the manufacturer Opel/Vauxhall in ECU diagnosis.

This includes the model ranges Astra, Corsa, Insignia, Movano, Vectra, Vivaro as well as Zafira and many others.

Among others, all relevant service functions as well as tire-, light- and trailer configurations are enclosed in service tasks for the named 29 models ranges with this release.

Electric Vehicles Coverage

With this release the coverage for electric vehicles will be extended with the following models:

| Brand | Vehicle |
|---------------|--------------|
| Fiat/Chrysler | Fiat500EV |
| Infinity | M35h |
| Nissan | Leaf |
| Renault | Kangoo Z.E. |
| | Fluence Z.E. |
| | Zoe Z.E. |
| | Twizy |

Network Setup

The Network Setup feature facilitates ESI[tronic] 2.0 deployment on PC networks. The ESI[tronic] 2.0 DVDs get copied to an initial PC. The information can then be duplicated to other PCs on the network. Each PC will then require its own installation and licensing.

Online Updates

Did you know it? Online Updates are part of your SD Vehicle Diagnostics subscription.

Simply register to the DDM (Diagnostics Download Manager) using your subscription details. The download process is automatic (internet connection required).

You access the latest diagnostic SD systems applications and features up to 3 months in advance of the next DVD update. One online release every 2 weeks on average!

Troubleshooting Instructions

This is another pretty unique feature that is continuously enhanced to help you saving time by finding most of the information of the "every day" essential information for your repair and body repair activities.

For instance within the SIS "1-All Systems" entry:

- Fuse box location and fuse details
- Battery and starting assistance points location
- Air-conditioning connectors ...

In addition, the "installation positions and removal/installation instruction" entry contains additional critical repair information for:

- Headlights
- TPMS
- Parking Aids
- and much more

